

# simplemat™ TileSetting Mat

the quickest,  
easiest, cleanest  
way to install tile

- no mortar – no mixing – no mess
- install at your own pace
- no waiting between setting and grouting

**SimpleMat is the quickest, easiest, and cleanest way to install tile on countertops and backsplashes. SimpleMat replaces traditional thin-set mortar or mastic adhesive. The adhesive retains its bonding strength for extended periods of time, meaning that users have the flexibility to tile onto the mat an hour at a time or over several days and because SimpleMat bonds instantly you can start grouting immediately.**

## THINGS YOU SHOULD KNOW

**Acceptable Tile** - SimpleMat can be used with any type of ceramic, porcelain or stone tile larger than 1" x 1" (2.5 x 2.5 cm). Mosaic tile with an open mesh backing can also be used as long as the adhesive sticks through the mesh to the stone. Stone tile should be gauged (uniform thickness with no cracks or loose pieces) and no thicker than 1/2" (13mm).

**Areas of Use** - SimpleMat is suitable for kitchen or bath counters and backsplashes. SimpleMat should not be used on floors, on ceilings, in showers or in areas constantly exposed to water. SimpleMat is not recommended for outdoor use.

**Surface Types** - SimpleMat can be used to tile over many household surfaces. Tile over drywall, plywood, WonderBoard® backerboard, concrete, painted surfaces, laminates and even old tile. All surfaces to be tiled should be flat, even and stable (ie no cracks, peeling, or surface movement).

**Surface Preparation** - SimpleMat will follow your wall or counter surface, so patch or level if needed.

**Setting Order** - Set countertop tiles prior to setting backsplash tiles. Set countertops from front to back, set backsplashes from bottom up.

**Clean Surfaces** - SimpleMat adheres to everything, including dust. Before installing be sure to wipe walls, counters, and backs of tile or stone to remove dust and ensure a strong bond.

**Coverage** - One box of SimpleMat covers 10 square feet (.92m<sup>2</sup>).

**Grout Requirement** - SimpleMat is designed to be used with grout to lock-in tile and stone. Use SimpleGrout™ Pre-Mixed Grout or Polyblend® Grout for your installation.

**Customer Support** - If you need additional information or to watch instructional videos visit [www.thesimplemat.com](http://www.thesimplemat.com). Customer support is available at 800.272.8786.

## TOOLS

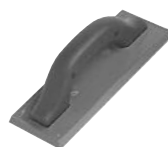
IN ADDITION TO YOUR TILE OR STONE, ALL YOU NEED TO COMPLETE YOUR PROJECT:



SimpleMat



SimpleGrout or Polyblend Grout



Grout Float



Tile Spacers



Sponge



Scissors

Your project may also require a tile saw or tile cutter.

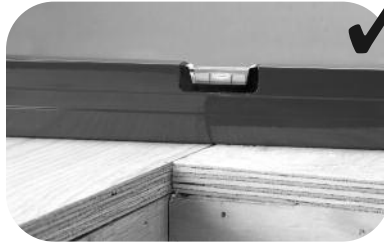
# STEP 1

# BEFORE YOU BEGIN

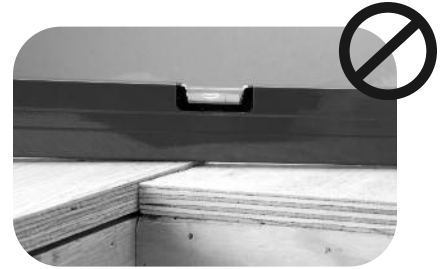
## PREPARE YOUR SURFACE



Clean dust and debris. Wipe with a damp sponge.

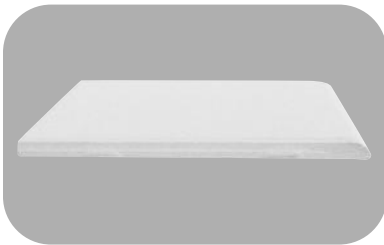


Ensure a flat surface.



Do not apply to uneven surfaces.

## TIPS BEFORE YOU SET YOUR COUNTERTOP – USING V-CAP OR BULL NOSE TILE



**BULL NOSE TILE:** Regular shaped tile with a rounded edge used for counter edge and other transitions.

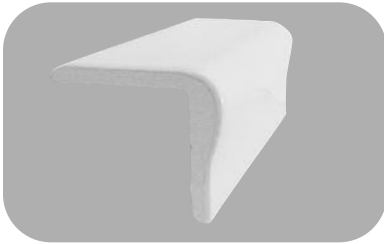


First apply tile to front of counter.



Ensure that counter tile overlaps and use spacers for a uniform grout joint.

**OR**



**V-CAP TILE:** L-shaped tile specifically used to cover the front edge of a countertop.



Because v-cap may not fit squarely on countertop, use SimpleGrout Pre-mixed Grout or SimpleFix Ceramic Tile & Fixture Caulk to fill voids between v-cap and countertop.

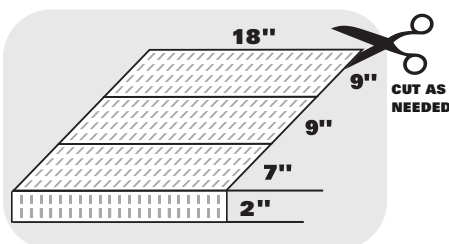


Do not apply excessive filler material as it will interfere with bond.

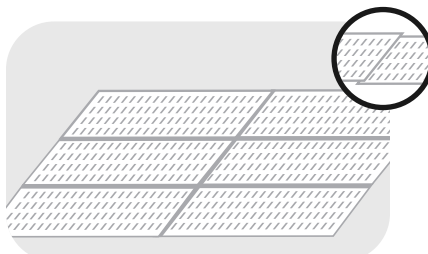
# STEP 2A

# COUNTERTOPS

## SIMPLEMAT LAYOUT FOR COUNTERTOP



For efficiency lay SimpleMat horizontally on counter.



Overlap SimpleMat edges 1/8" to 1/4" (3 - 6mm). Overlapping is shaded in gray in illustration.

# COUNTERTOPS cont.

## APPLYING SIMPLEMAT TO COUNTERTOP



Peel off white paper.



Apply SimpleMat to counter.



Flatten air bubbles and creases.



Cover all surfaces to be tiled.

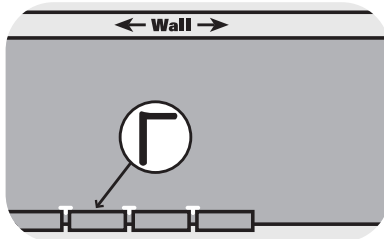


Cut SimpleMat as needed.

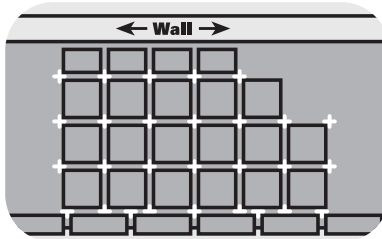


Cut corner from end of mat to facilitate folding of corner.

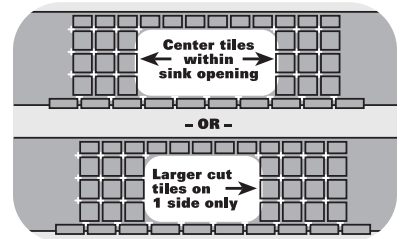
## TILE LAYOUT FOR COUNTERTOPS



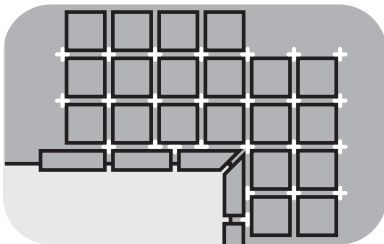
Begin layout by positioning the front edge tiles bull nose or v-cap along the front of the countertop.



Do a dry run by placing as many full tiles on the countertop with spacers as necessary. If countertop abuts a wall, lay cut tiles against the wall.



For straight countertops, mark centerline of countertop or sink, then lay tiles so cut pieces beside sink are the same width. Avoid less than half-width cut tiles by shifting the layout 1/2 tile left or right.



For L-shaped countertops, lay full tiles at inside corner. Set bull nose or v-cap pieces in place to ensure correct amount of overhanging pieces.

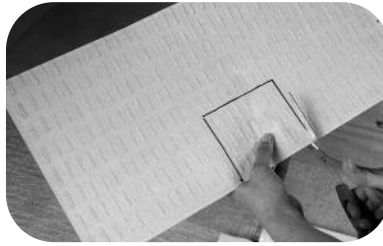
## STEP 2B

# BACKSPLASHES

## APPLYING SIMPLEMAT TO BACKSPLASH



Place SimpleMat in position and mark cuts if needed.

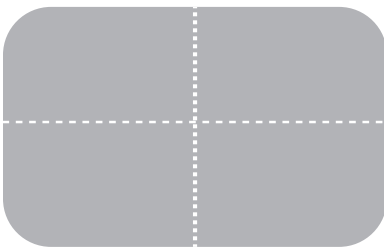


Cut SimpleMat with scissors or utility knife.

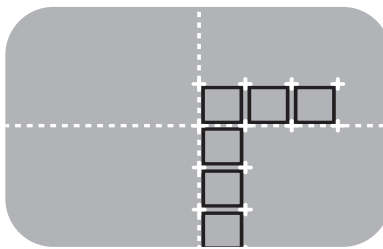


Apply SimpleMat and flatten air bubbles and creases.

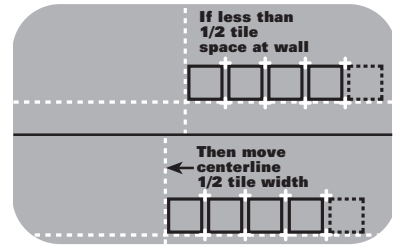
## TILE LAYOUT FOR BACKSPLASHES



Mark centerlines of the wall.

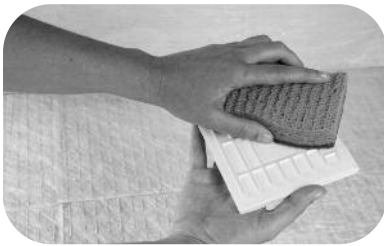


To determine tile placement and cuts, lay it out on the floor first, placing a row of tiles along each line using spacers. Then replicate the measurements on the wall.

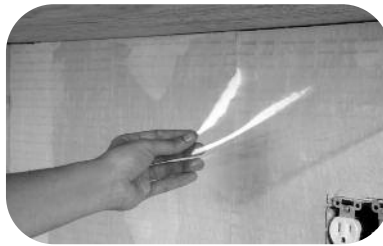


If the space at the wall end is less than 1/2 tile, shift centerline to eliminate small cuts. This will allow wide, even tiles at both edges.

## STEP 3 SETTING TILE ON COUNTERTOPS & BACKSPLASHES



Clean back of tile or stone with a damp sponge. Tile must be dry before setting.



Remove clear plastic from SimpleMat.



Lightly set tile into place using tile spacers.



Adjust tiles as needed.



Press tile firmly to lock into place.



Ready to grout with SimpleGrout or Polyblend Grout. You can grout immediately.



**CUSTOM**  
BUILDING PRODUCTS

Custom Building Products  
Seal Beach, CA 90740  
800-272-8786  
www.custombuildingproducts.com  
©2009

[www.thesimplemat.com](http://www.thesimplemat.com)

CODE 62321 8/09R